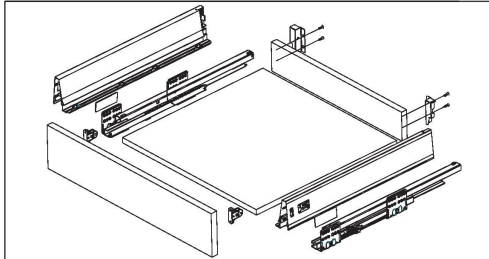


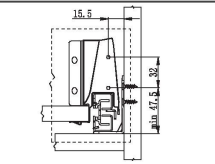
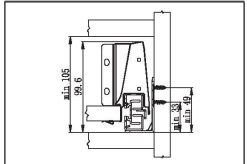
Installation instructions of drawer system

Basic components

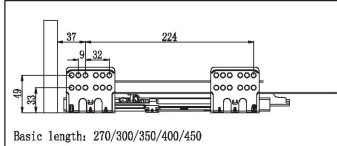


Required space of the cabinet

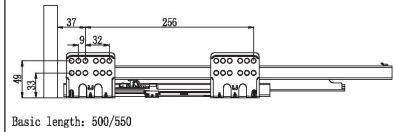
Installed dimensions of the front connector & panel



Installed hole distance of the slide

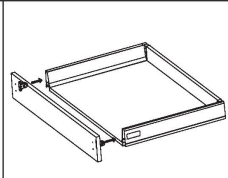
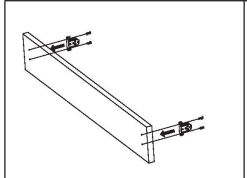


Basic length: 270/300/350/400/450

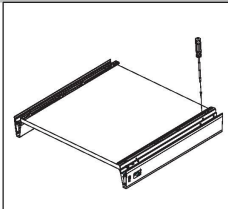
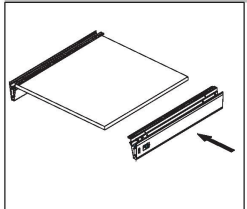


Basic length: 500/550

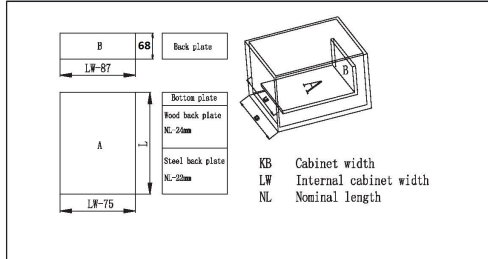
Install the panel



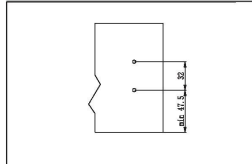
Install the drawer



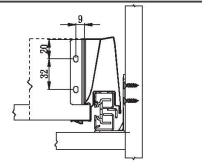
Cutting dimensions of 16mm thick MDF



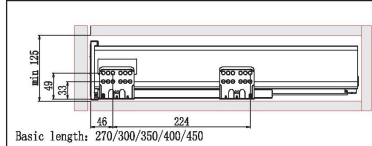
Drilling dimensions of the panel for INSERTA & automatic installation



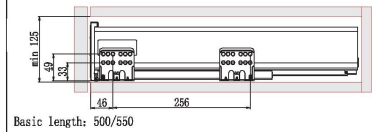
Installed dimensions of the back plate



Required space of the cabinet & installed hole distance of the slide for inner drawer

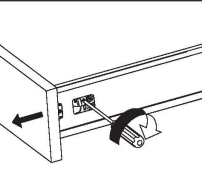
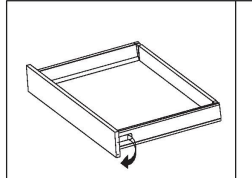


Basic length: 270/300/350/400/450

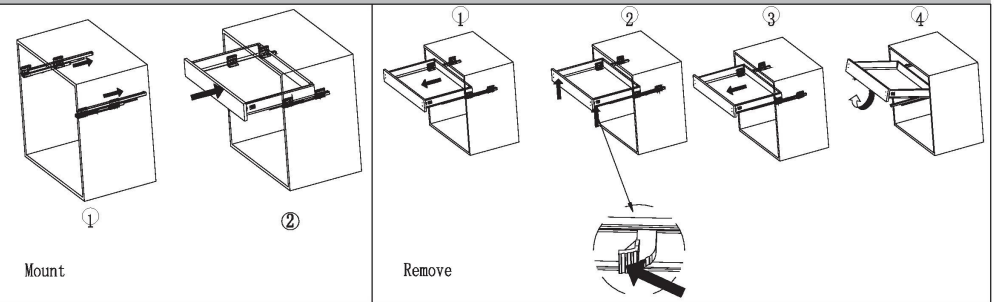


Basic length: 500/550

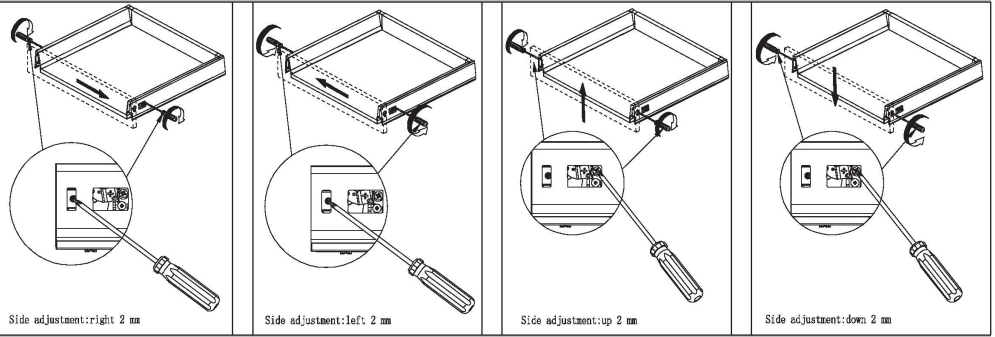
Remove the panel



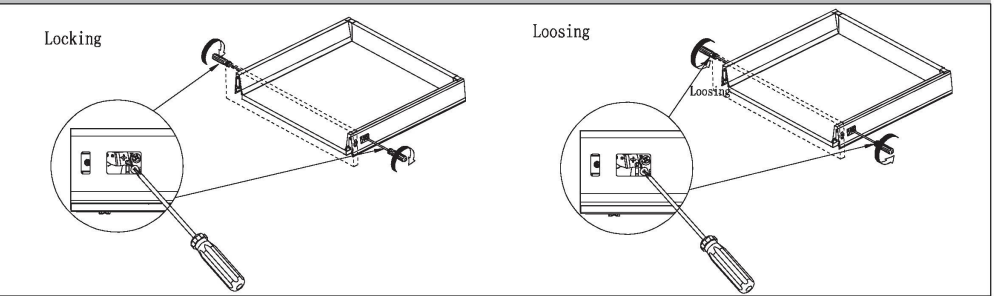
Mount & remove the drawer



Adjustment



Locking and Loosing



Install the internal panel

